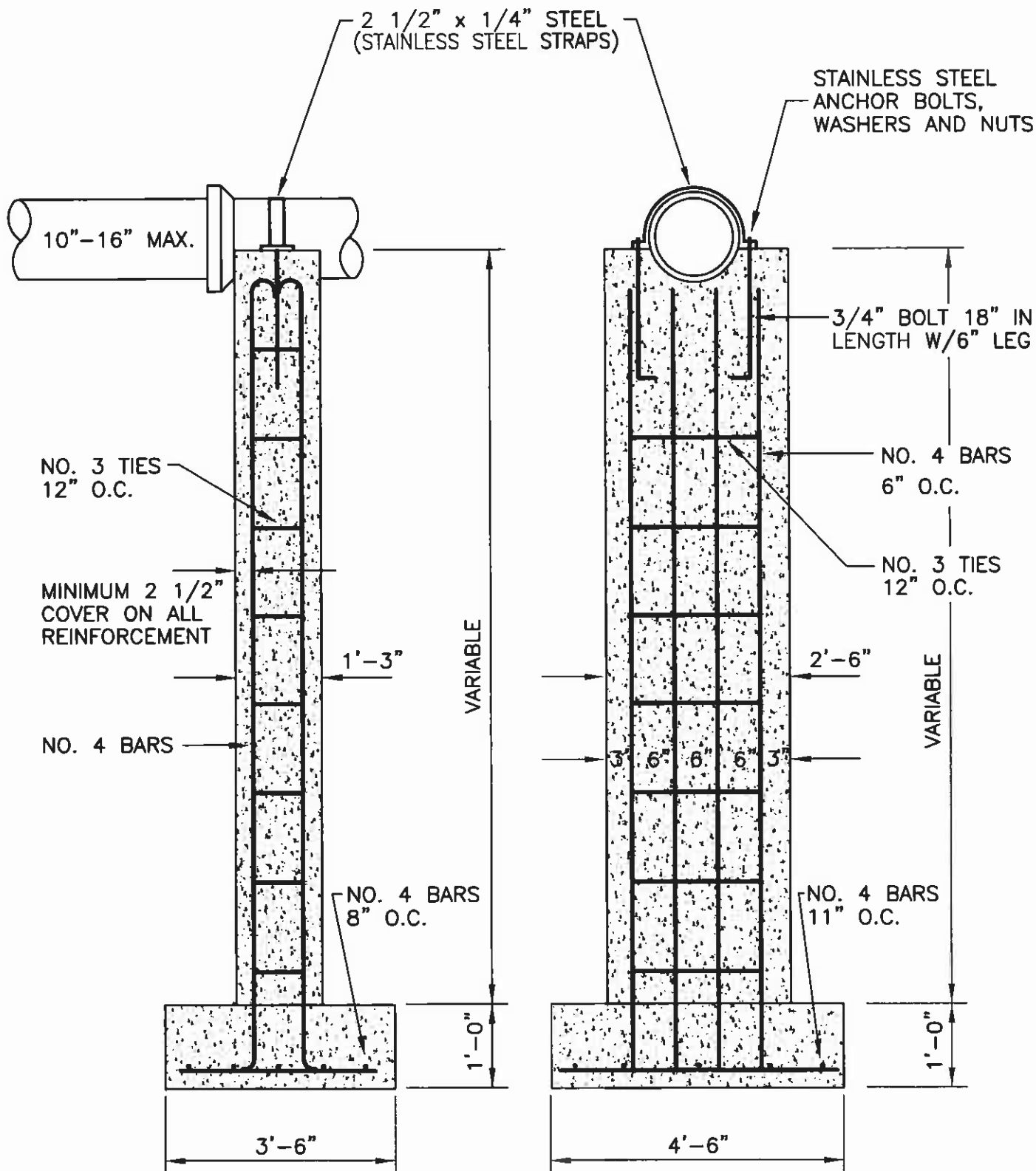


SS-6

CITY OF MEBANE
STANDARD

CONCRETE PIER

SCALE : N.T.S.	DATE : 11/05/09	DRAWN BY: MHW
----------------	-----------------	---------------

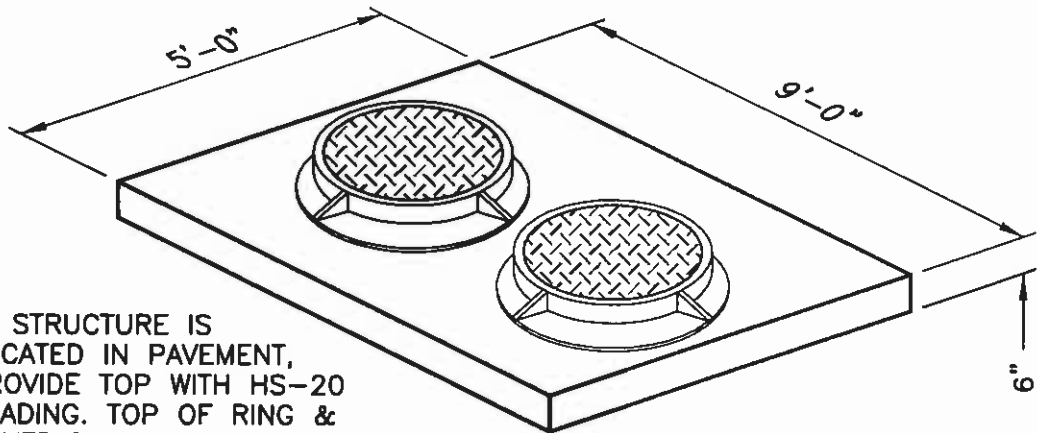


SS-7

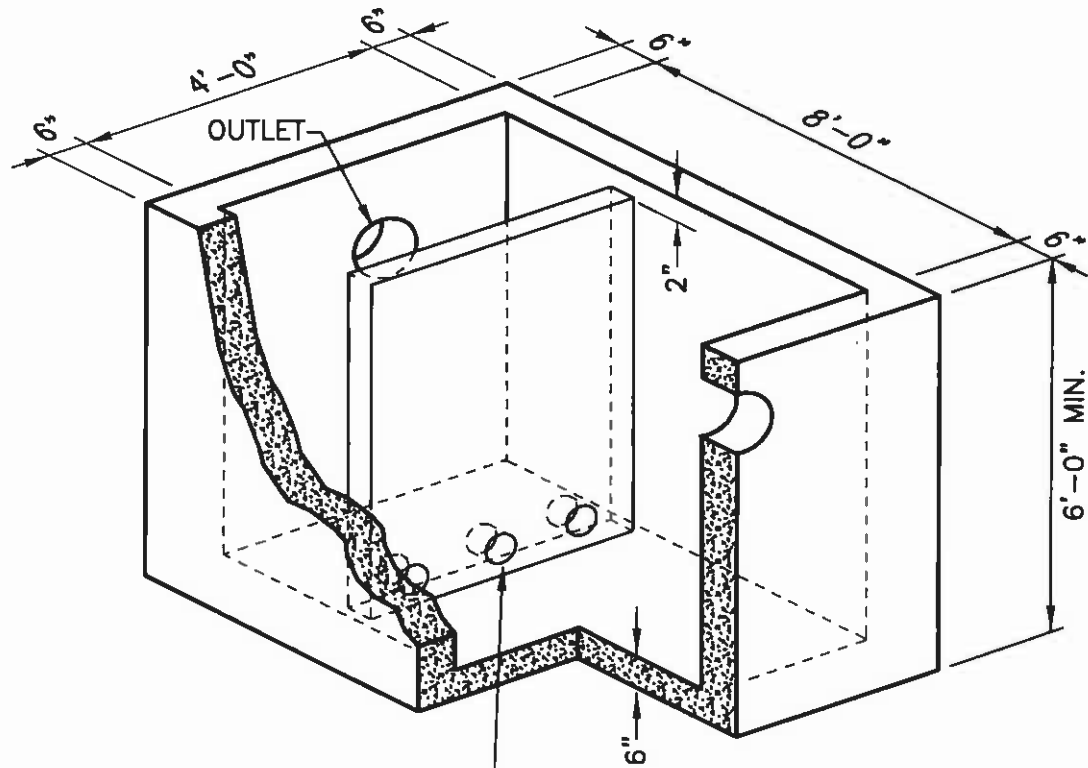
CITY OF MEBANE
STANDARD

CONCRETE PIER

SCALE : N.T.S.	DATE : 11/05/09	DRAWN BY: MHW
----------------	-----------------	---------------



NOTE : IF STRUCTURE IS LOCATED IN PAVEMENT, PROVIDE TOP WITH HS-20 LOADING. TOP OF RING & COVER TO BE AT FINISHED GRADE.



CONCRETE BAFFLE WITH 3-4" HOLES IN BOTTOM

NOTE : PROVIDE REINFORCING AS APPROPRIATE FOR LOCATION.

SS-8a

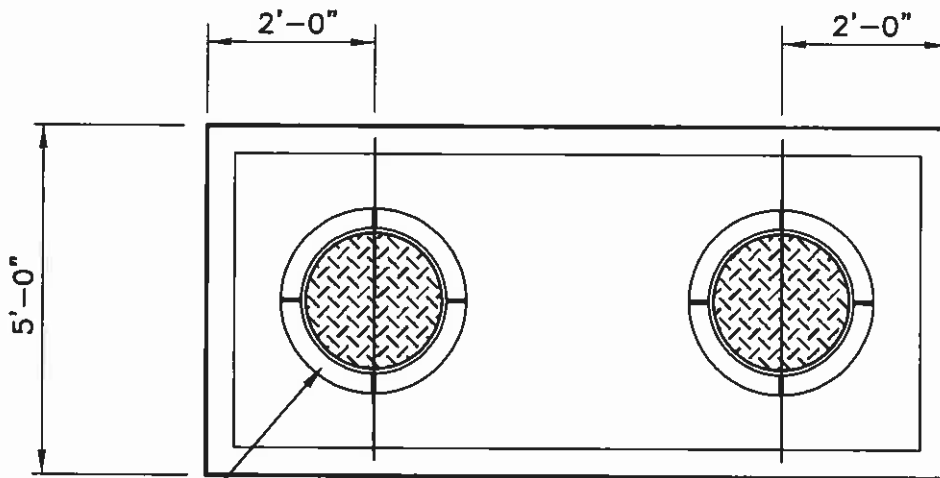
CITY OF MEBANE
STANDARD

1,000 GALLON
GREASE TRAP

SCALE : N.T.S.

DATE : 4/26/99

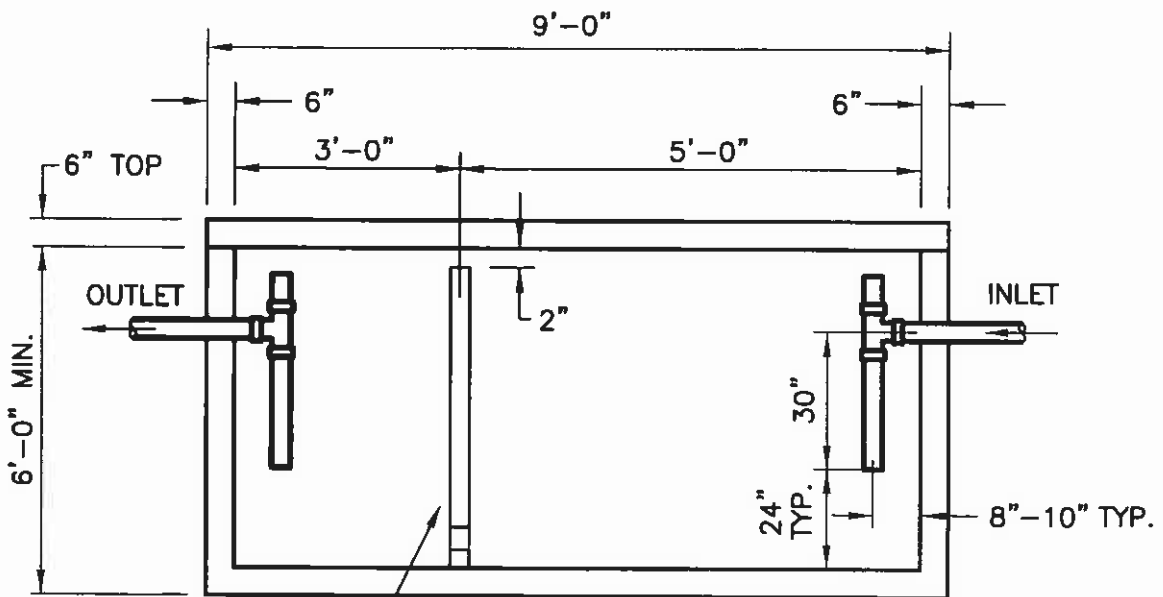
DRAWN BY: PLW



MANHOLE RING & COVER, TYP.

PLAN

NOTE : IF STRUCTURE IS LOCATED IN PAVEMENT, PROVIDE TOP WITH HS-20 LOADING. TOP OF RING & COVER TO BE AT FINISHED GRADE.



CONCRETE BAFFLE WITH 3-4" HOLES IN BOTTOM

SECTION

NOTE : PROVIDE REINFORCING AS APPROPRIATE FOR LOCATION.

SS-8b

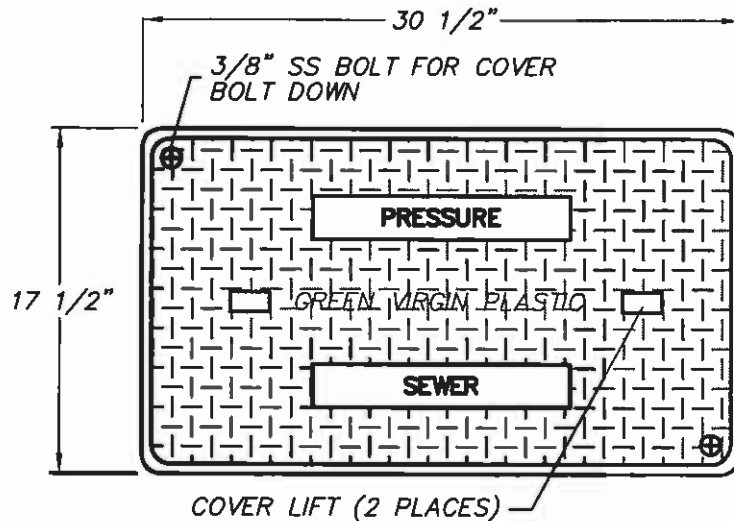
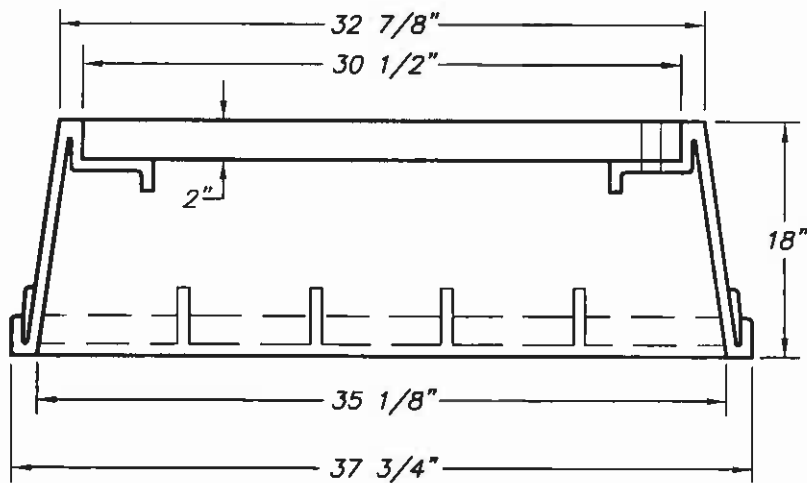
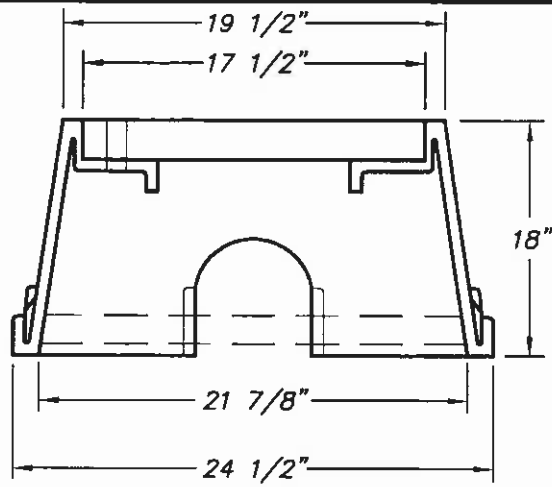
CITY OF MEBANE
STANDARD

1,000 GALLON
GREASE TRAP

SCALE : N.T.S.

DATE : 4/26/99

DRAWN BY: PLW



PLAN VIEW

SS-9

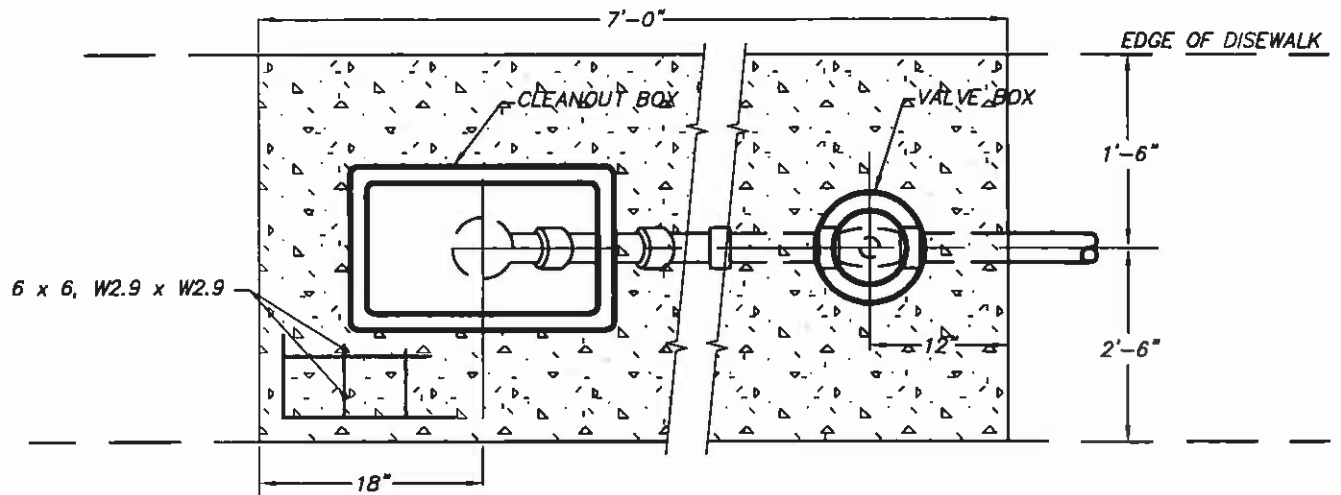
CITY OF MEBANE
STANDARD

STANDARD PRESSURE SEWER
METER BOX

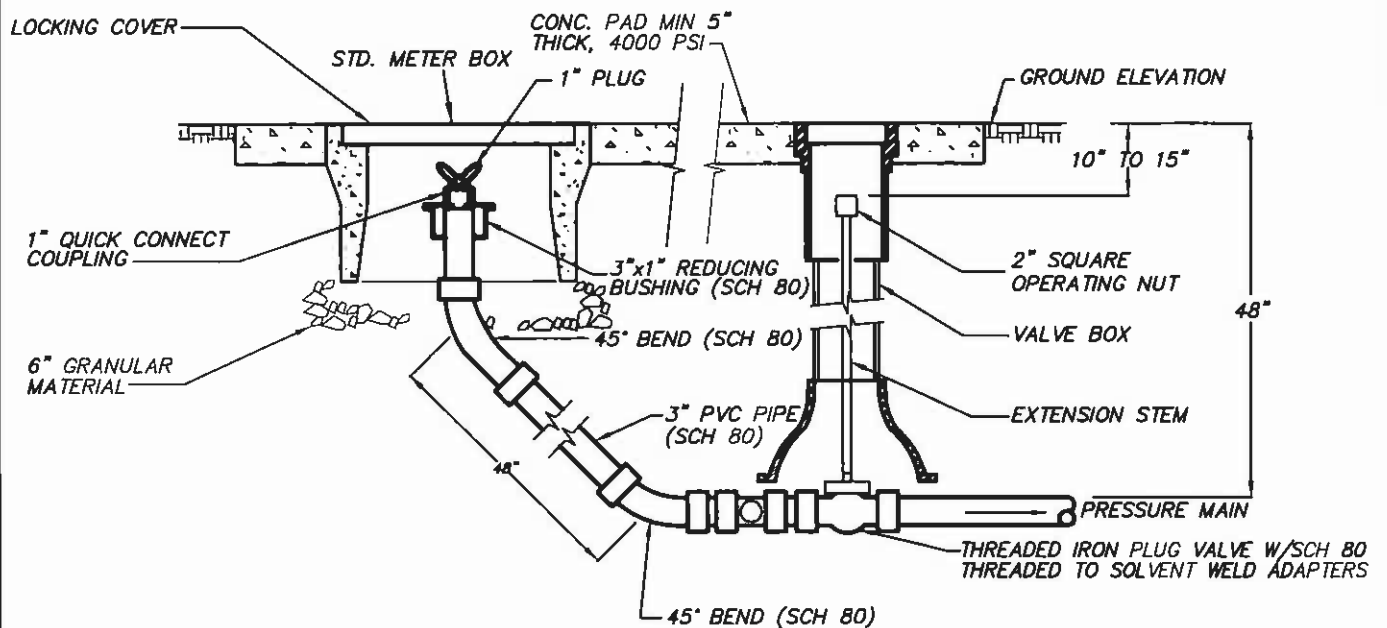
SCALE : N.T.S.

DATE : 11/05/09

DRAWN BY: MHW



PLAN VIEW



ELEVATION "A-A"

SS-10

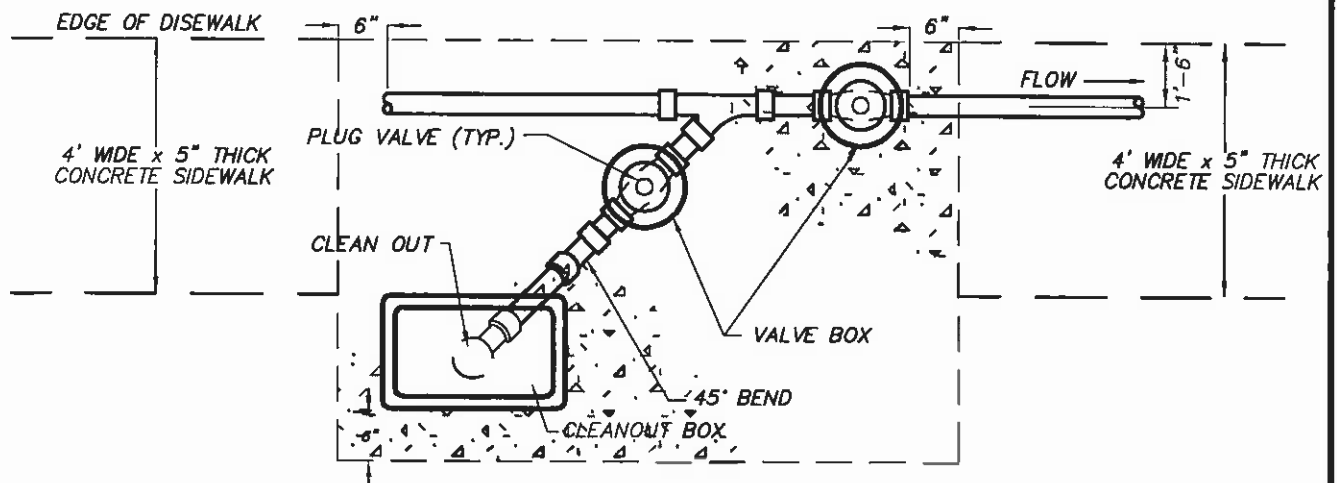
CITY OF MEBANE
STANDARD

CLEANOUT AT END OF MAIN
FOR PRESSURE SEWER SYSTEMS

SCALE: N.T.S.

DATE: 11/05/09

DRAWN BY: MHW

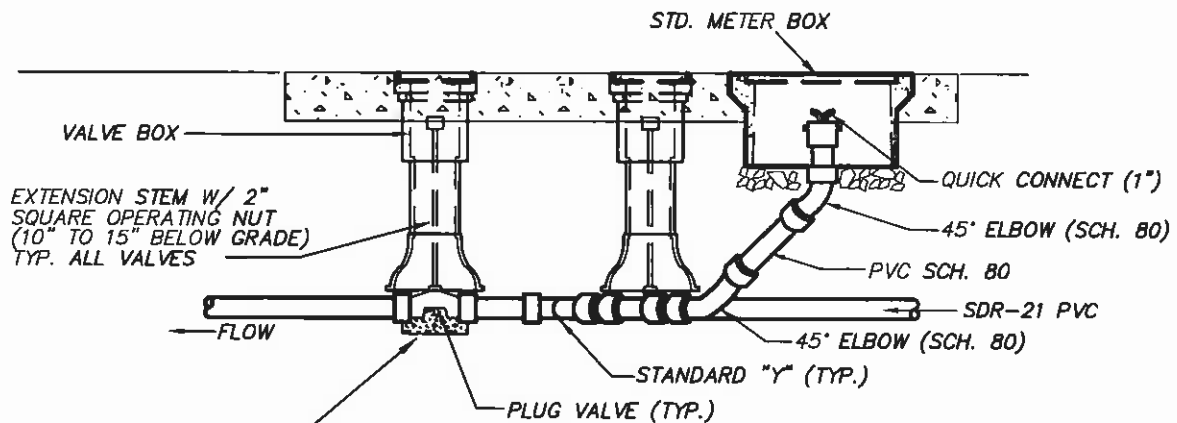


NOTES:

CONCRETE PAD UNDER AND UP ON SIDES OF ALL VALVES TO PREVENT SETTLEMENT AND TWISTING OF VALVE.

CONCRETE PAD SHALL BE MIN. 5" THICK, 4000 PSI

PLAN VIEW



NOTE: CONTRACTOR SHALL LOCATE BOTTOM OF VALVE BOX SUCH THAT BOX SHALL BEAR ONTO A BRICK SUPPORT & NOT THE PIPE OR VALVE.

ELEVATION

SS-11

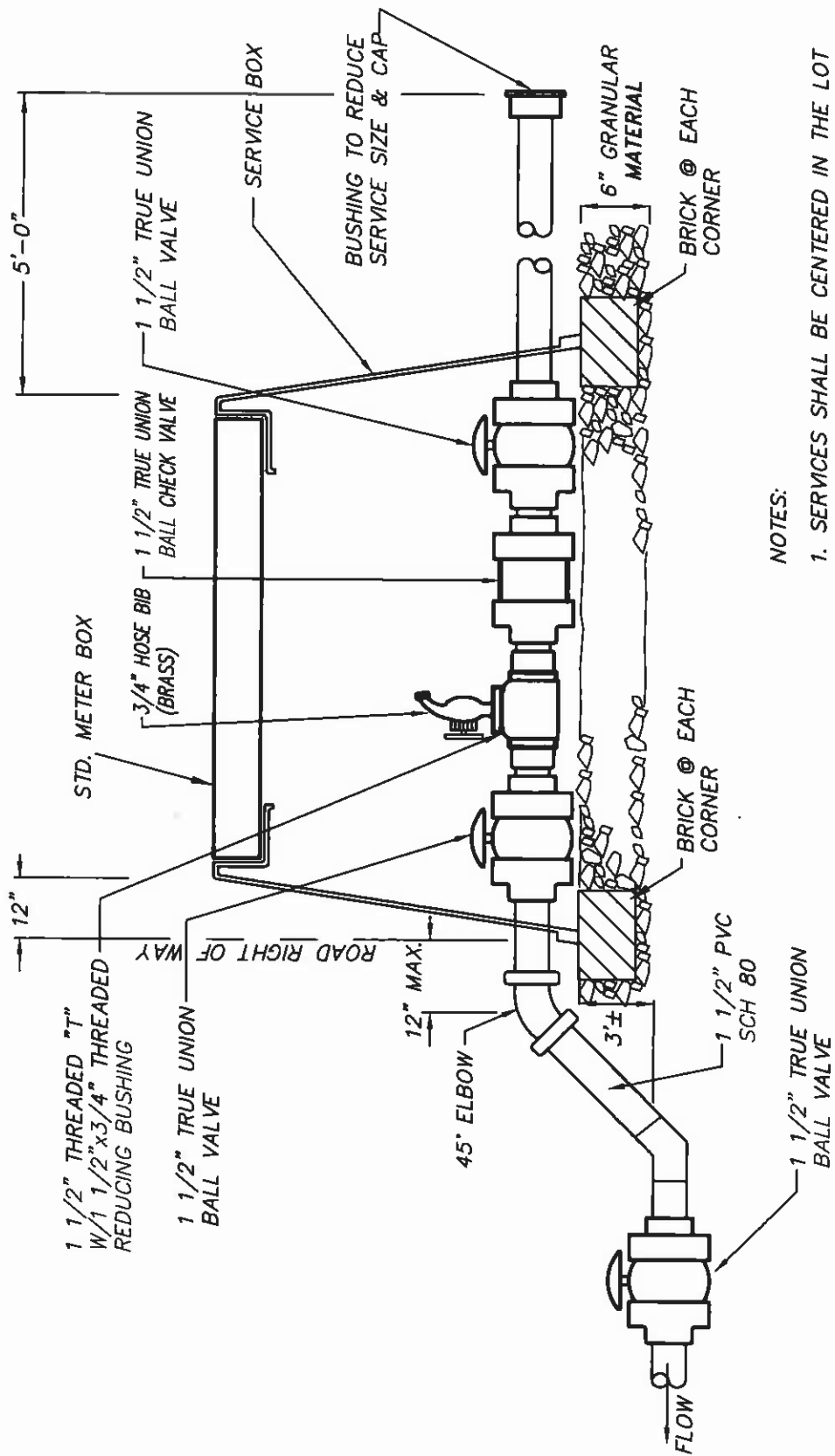
**CITY OF MEBANE
STANDARD**

**MAIN LINE VALVE
FOR PRESSURE SEWER SYSTEM**

SCALE : N.T.S.

DATE : 11/05/09

DRAWN BY: MHW



NOTES:

1. SERVICES SHALL BE CENTERED IN THE LOT ROAD FRONTAGE.
2. BOX SHALL NOT BE IN SIDEWALKS OR DRIVEWAYS.
3. TOP OF BOX SHALL BE FLUSH WITH FINISH GRADE OF LOT.

SS-12

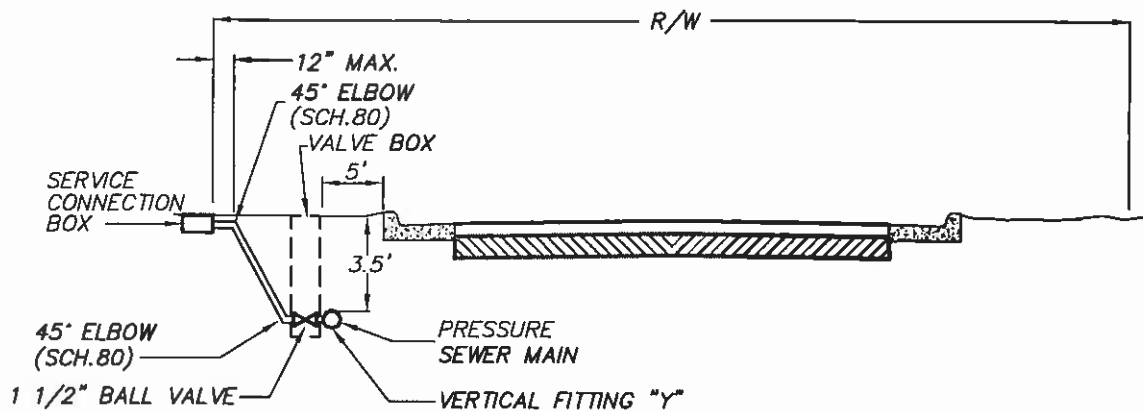
CITY OF MEBANE STANDARD

STANDARD PRESSURE SEWER SERVICE CONNECTION

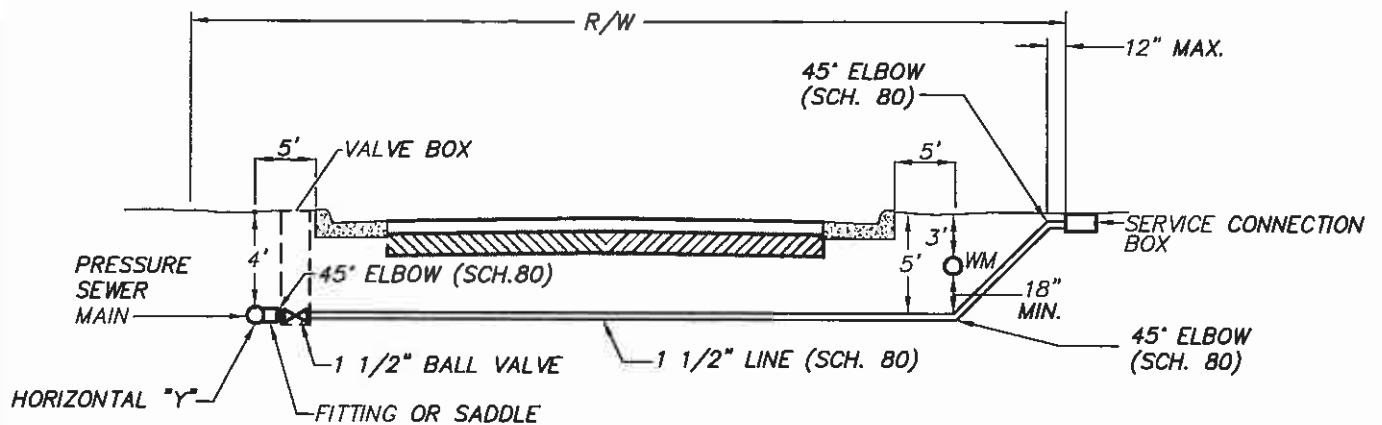
SCALE : N.T.S.

DATE : 3/26/03

DRAWN BY: MHW



PRESSURE SEWER SHORT SIDE LATERAL SERVICE



PRESSURE SEWER LONG SIDE LATERAL SERVICE

SS-13

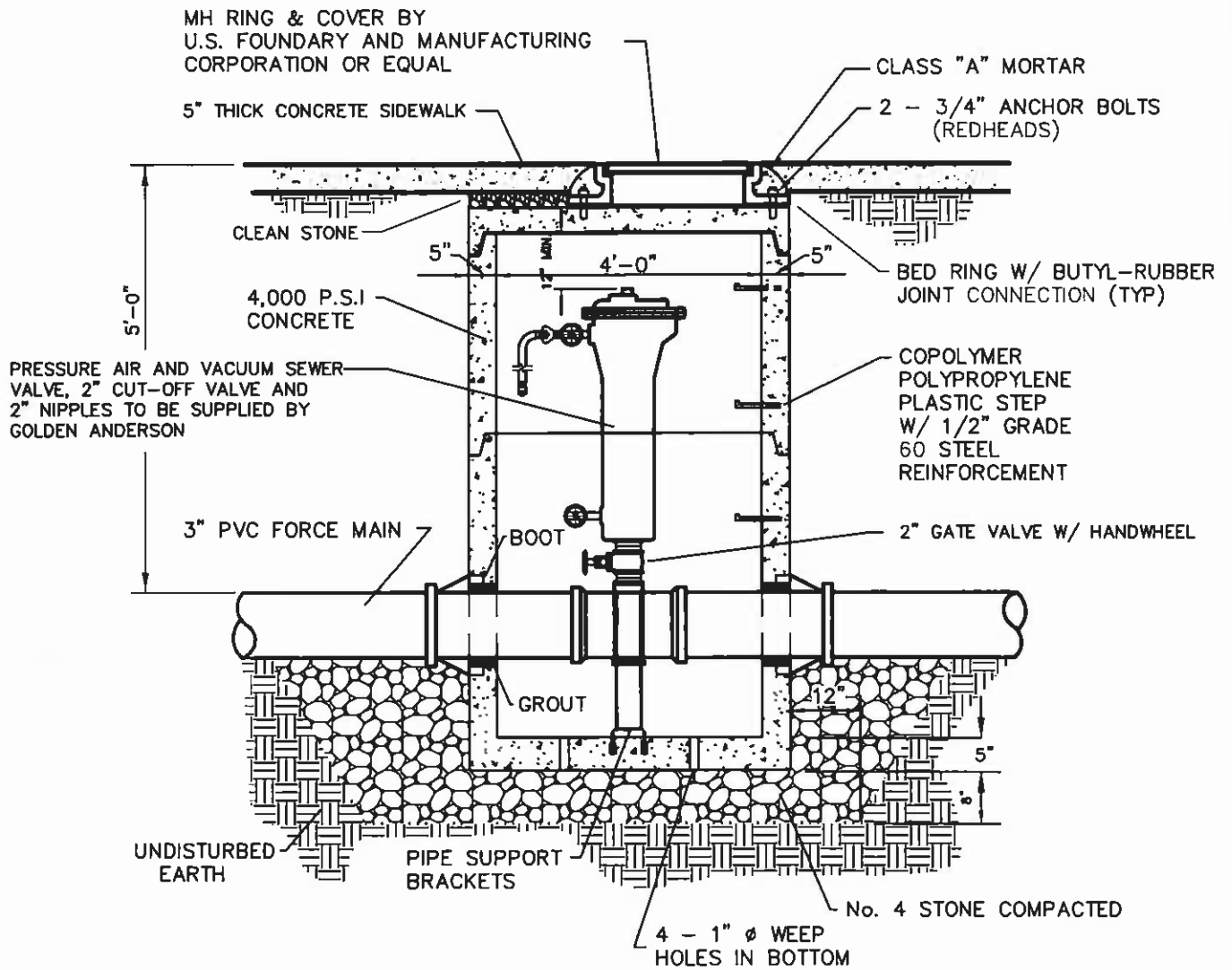
CITY OF MEBANE
STANDARD

PRESSURE SEWER
LATERAL SERVICES

SCALE : N.T.S.

DATE : 3/26/03

DRAWN BY: MHW



SS-14

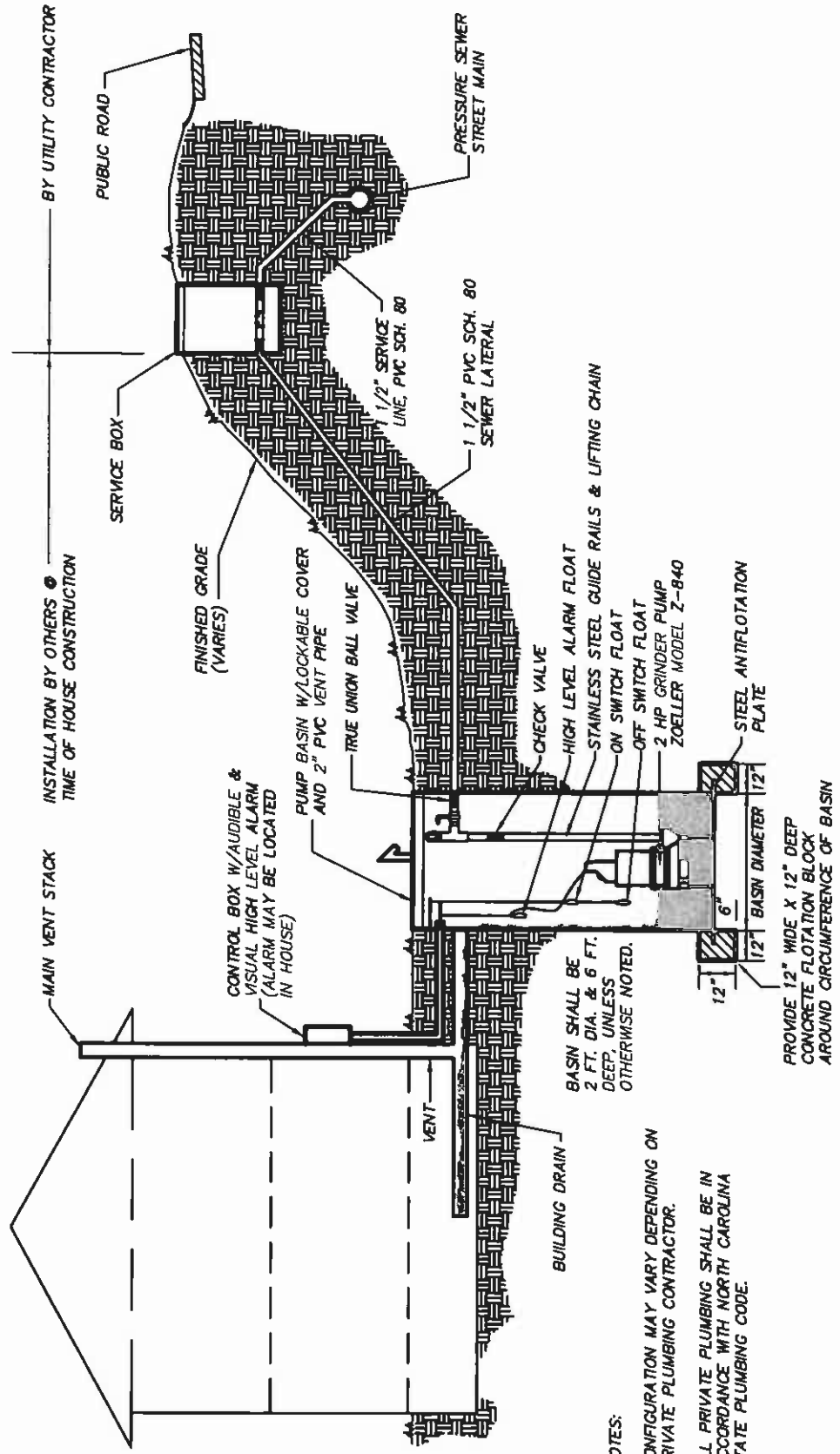
CITY OF MEBANE
STANDARD

SEWER AIR RELIEF MANHOLE
W/FLAT SLAB TOP

SCALE : N.T.S.

DATE : 11/05/09

DRAWN BY: MHW



BASIN SHALL BE
2 FT. DIA. & 6 FT.
DEEP, UNLESS
OTHERWISE NOTED.

NOTES:
CONFIGURATION MAY VARY DEPENDING ON
PRIVATE PLUMBING CONTRACTOR.

ALL PRIVATE PLUMBING SHALL BE IN
ACCORDANCE WITH NORTH CAROLINA
STATE PLUMBING CODE.

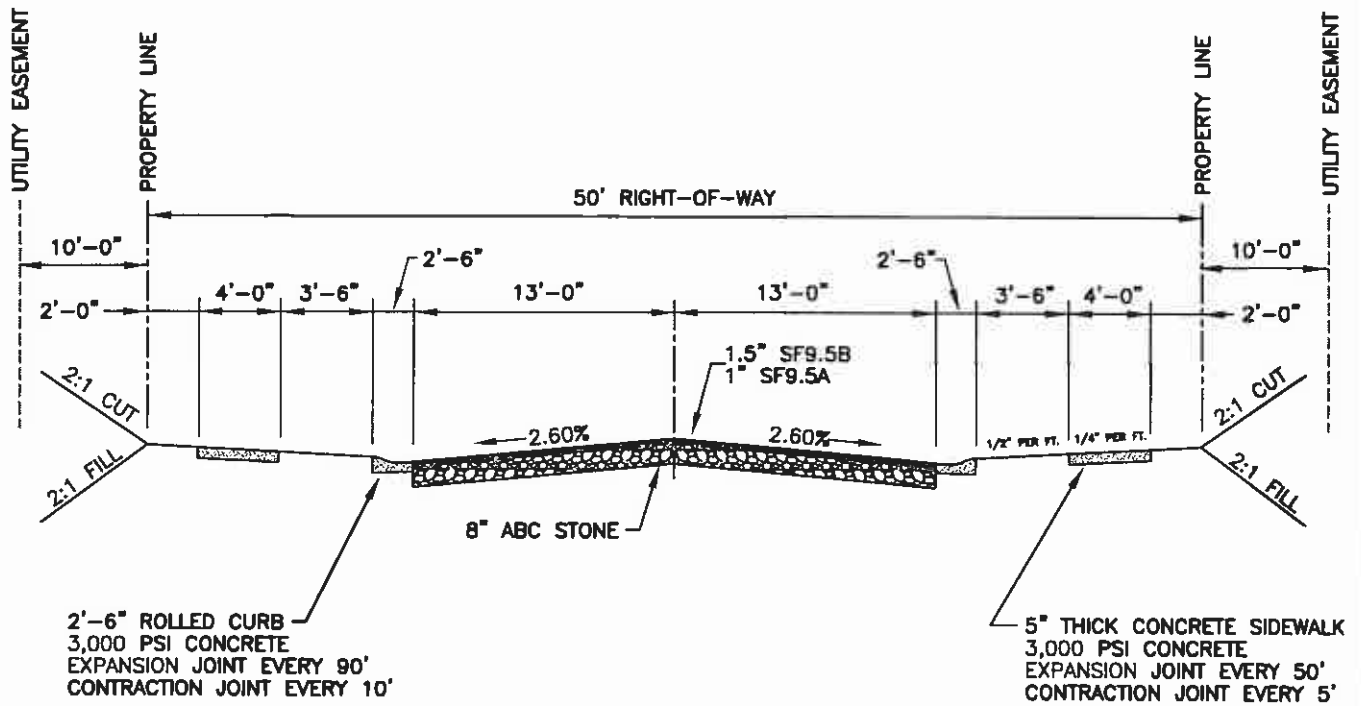
PROVIDE 12" WIDE X 12" DEEP
CONCRETE FLOTATION BLOCK
AROUND CIRCUMFERENCE OF BASIN

CITY OF MEBANE STANDARD

INDIVIDUAL GRINDER PUMP SYSTEM

SS-15

SCALE : N.T.S. DATE : 11/05/09 DRAWN BY: MHW



NOTE : ALL ASPHALT CEMENT PLANT MIX AND METHOD OF PLACEMENT SHALL COMPLY WITH N.C. DOT STANDARD SPECIFICATIONS.

ST-1

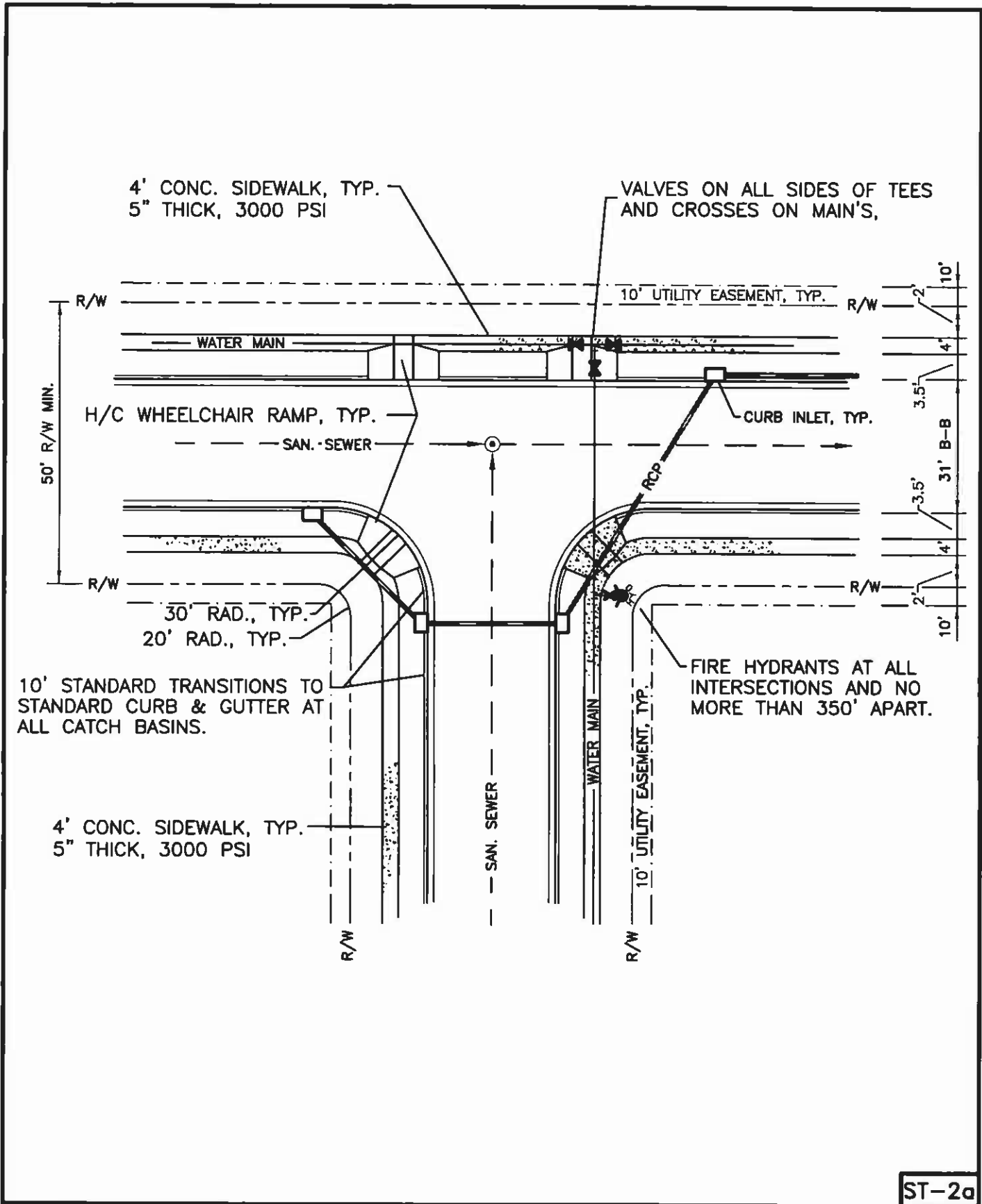
CITY OF MEBANE
STANDARD

RESIDENTIAL STREET SECTION

SCALE : N.T.S.

DATE : 11/05/09

DRAWN BY: MHW



CITY OF MEBANE STANDARD

GENERAL SUBDIVISION REQUIREMENTS FOR ROADWAYS AND UTILITIES

SCALE : N.T.S.

DATE : 3/13/02

DRAWN BY: MHW

NOTES :

1.) UTILITY LOCATIONS

- WATER LINE UNDER THE SIDEWALK
- SEWER LINE MIDDLE OF STREET
- NATURAL GAS BETWEEN SIDEWALK AND CURB AND GUTTER
- ELECTRIC UNDERGROUND IN 10' UTILITY EASEMENT ADJACENT TO STREET R/W
- TELEPHONE IN 10' UTILITY EASEMENT ADJACENT TO STREET R/W
- CABLEVISION IN RIGHT OF WAY BEHIND SIDEWALK

2.) WATER AND SEWER IMPROVEMENTS

- ALL WATER LINES ARE TO BE A MIN. OF 8" IN SIZE EXCEPT FOR CUL-DE-SACS WHERE 6" IS ALLOWED WHEN LESS THAN 600 FT. AND 4" IS ALLOWED WHEN LESS THAN 400 FT.
- WATER MAIN IS TO BE DUCTILE IRON PIPE CLASS 50
- SEWER MAINS ARE TO BE A MIN. OF 8" IN SIZE
- SEWER MAINS ARE TO BE VITRIFIED CLAY PIPE IN INDUSTRIAL AREAS
- FOR RESIDENTIAL AREAS, PVC SDR-35 CAN BE USED AS APPROVED BY THE PUBLIC WORKS DIRECTOR

3.) STORM DRAINAGE

- ALL STORM DRAINS ARE TO BE A MIN. OF 15 INCH IN SIZE
- MATERIALS ARE TO BE REINFORCED CONCRETE PIPE OR HDPE EXCEPT WHEN LARGER THAN 72 INCH. ALTERNATIVE PIPE MATERIAL MAY BE USED AS APPROVED BY THE PUBLIC WORKS DIRECTOR
- CURB INLETS TO BE LOCATED WHERE NO MORE THAN 1.0 ACRE OF DRAINAGE CONTRIBUTES TO ANY INLET EXCEPT IN SAGS WHERE 6' WIDE BASINS CAN BE USED WHICH WILL BE ALLOWED TO DRAIN 1.5 ACRE SUB-BASINS.

4.) CONCRETE SIDEWALKS

- 3,000 P.S.I.
- 4' WIDE AND 5" THICK
- SEE CURRENT CITY REQUIREMENTS

5.) OTHER

- ANY CHANGES TO THE GENERAL REQUIREMENTS SHALL BE PRE-APPROVED BY THE PUBLIC WORKS DIRECTOR
- CITY OF MEBANE STANDARD SPECIFICATIONS AND DETAILS ARE TO BE USED
- NO BURNING ALLOWED INSIDE THE CITY OF MEBANE
- THE CITY HAS THE RIGHT TO REQUEST RELOCATION OF ANY UTILITY LINES OR CABLES NOT INSTALLED IN ACCORDANCE WITH THESE REQUIREMENTS, UNLESS PRIOR APPROVAL IS MADE FOR A VARIANCE.

ST-2b

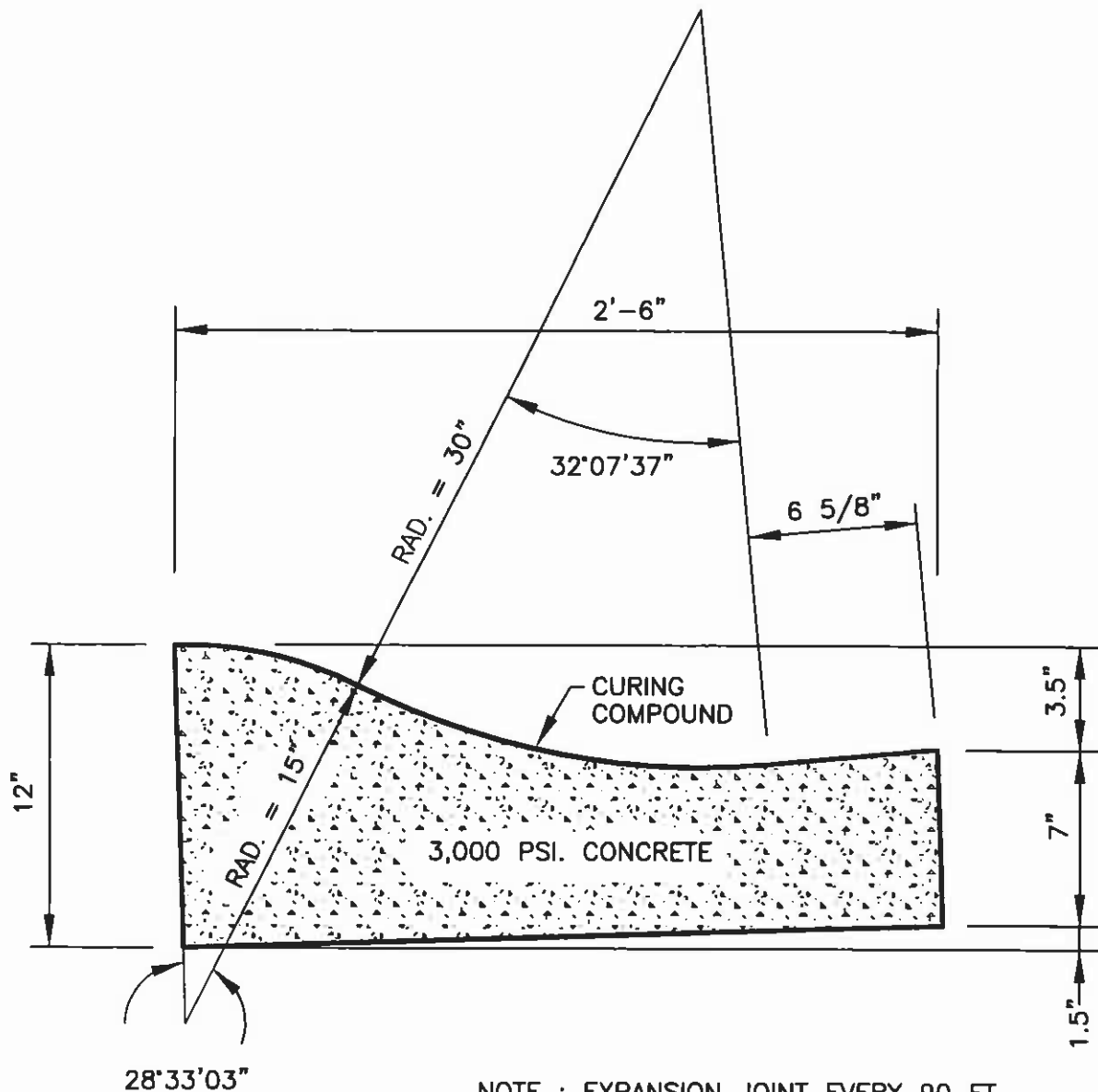
CITY OF MEBANE
STANDARD

GENERAL SUBDIVISION REQUIREMENTS
FOR ROADWAYS AND UTILITIES

SCALE : N.T.S.

DATE : 11/05/09

DRAWN BY: MHW



NOTE : EXPANSION JOINT EVERY 90 FT.
 CONTRACTION JOINT EVERY 10 FT.

ST-3

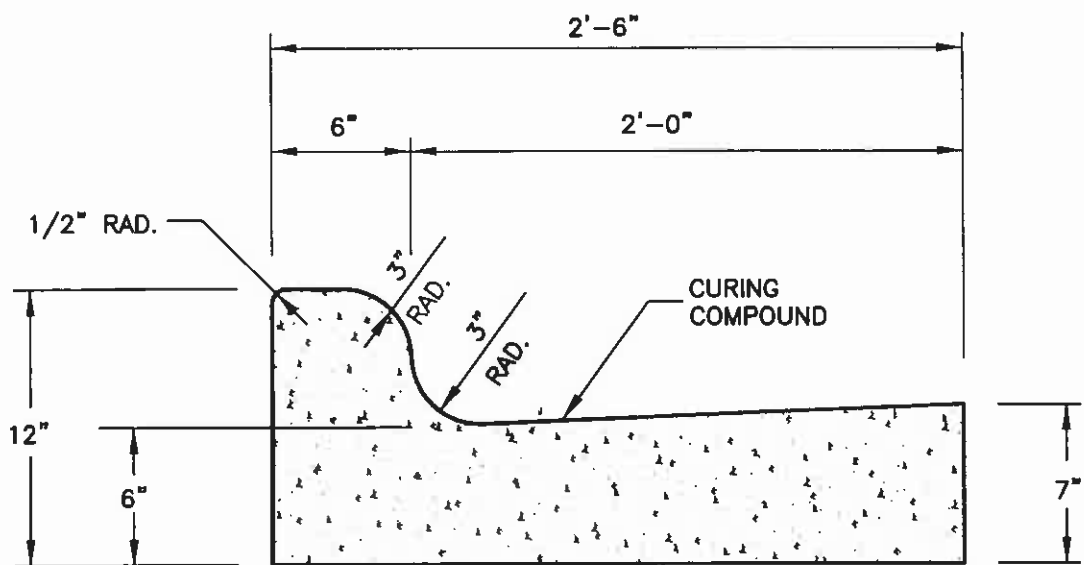
CITY OF MEBANE
 STANDARD

30" ROLLED CURB

SCALE : N.T.S.

DATE : 3/13/02

DRAWN BY: MHW



3,000 PSI CONCRETE CURB
 EXPANSION JOINT EVERY 90'
 CONTRACTION JOINT EVERY 10'

ST-4

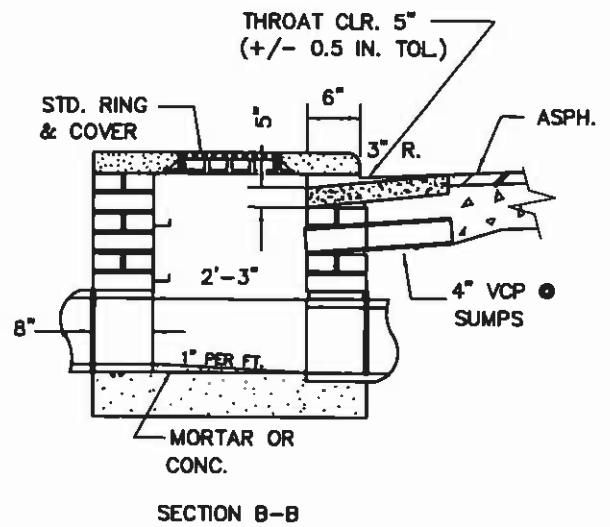
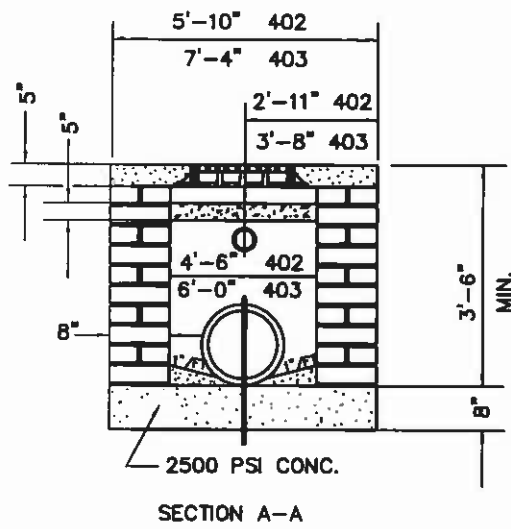
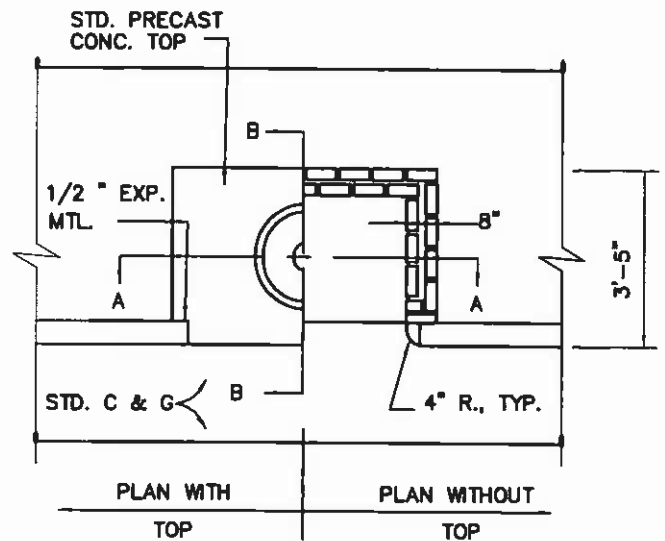
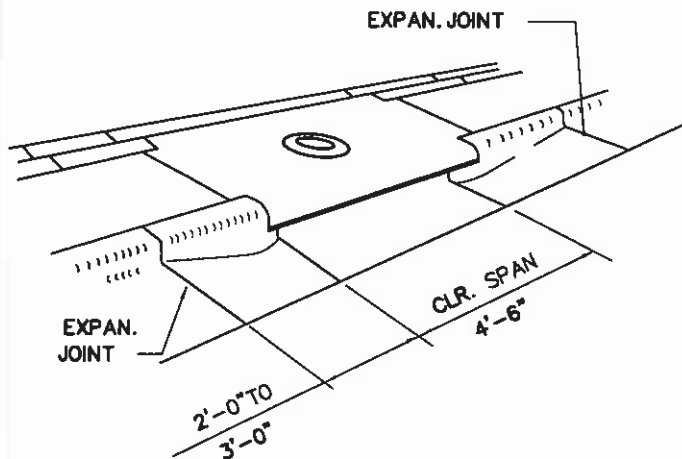
CITY OF MEBANE
 STANDARD

30" STANDARD CURB

SCALE : N.T.S.

DATE : 11/05/09

DRAWN BY: MHW



NOTES:

ALL MORTAR JOINTS ARE TO BE 1/2" | 1/8"

BRICK MASONRY CAN BE STANDARD CLAY BRICK, JUMBO BRICK, OR CONC. BRICK

FOR DEPTHS OVER 4'-0" USE STEPS ON 1'-3" CENTERS.

STANDARD BRICK MASONRY CURB INLET

C.O.M. STD.#402
C.O.M. STD.#403

ST-5

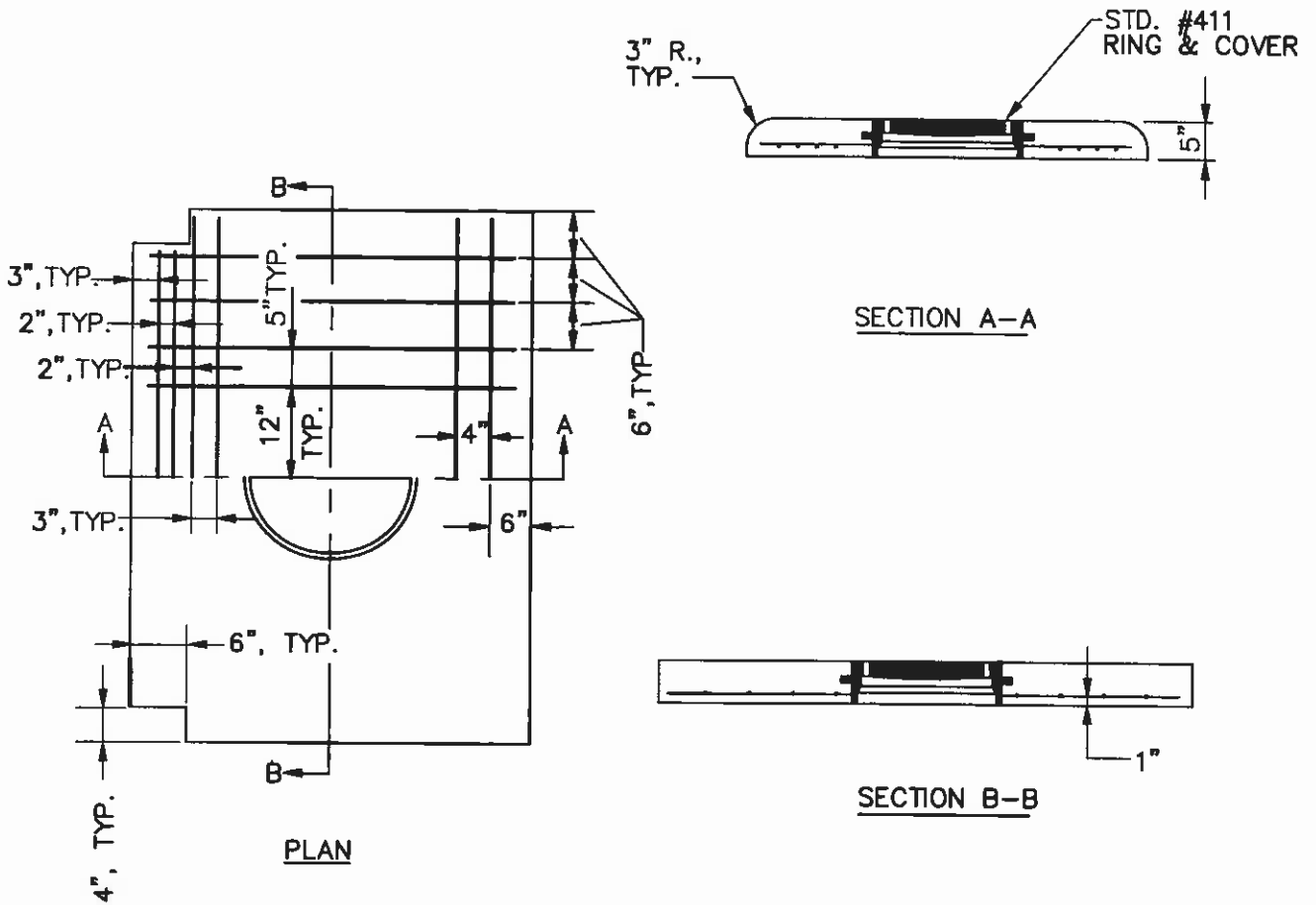
**CITY OF MEBANE
STANDARD**

**CURB INLET
DETAILS (402 & 403)**

SCALE : N.T.S.

DATE : 3/13/02

DRAWN BY: MHW



STD. 402 INLET TOP REQUIRES 4,
#4 BARS IN STREET FACE.
STD. 403 INLET TOP REQUIRES 4,
#5 BARS IN STREET FACE.
ALL OTHER REINFORCING STEEL
IS #4 BARS.

STANDARD PRECAST CONCRETE CURB INLET TOP
C.O.M. STD.#412

ST-6

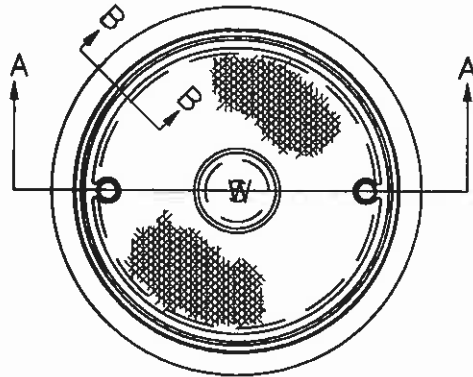
CITY OF MEBANE
STANDARD

CURB INLET TOP
DETAIL (412)

SCALE :N.T.S.

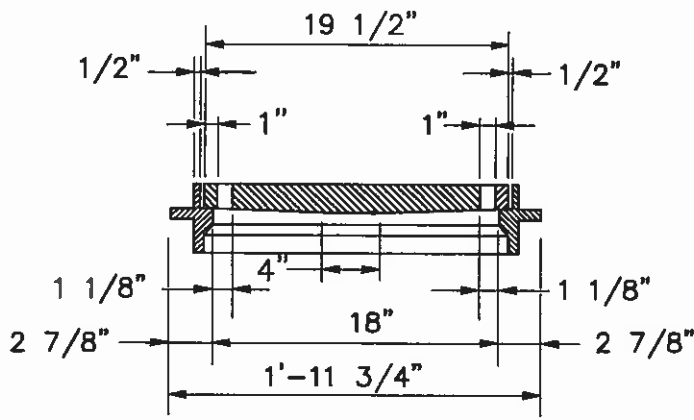
DATE : 3/13/02

DRAWN BY: MHW

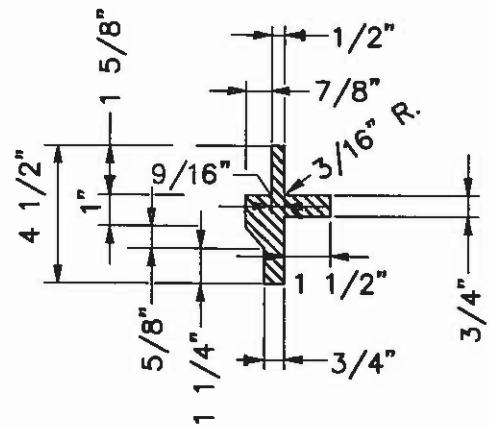


RING - 70 LBS.
COVER - 118 LBS.

PLAN



SECTION A-A



SECTION B-B

STANDARD INLET RING & COVER

C.O.M. STD.#411

ST-7

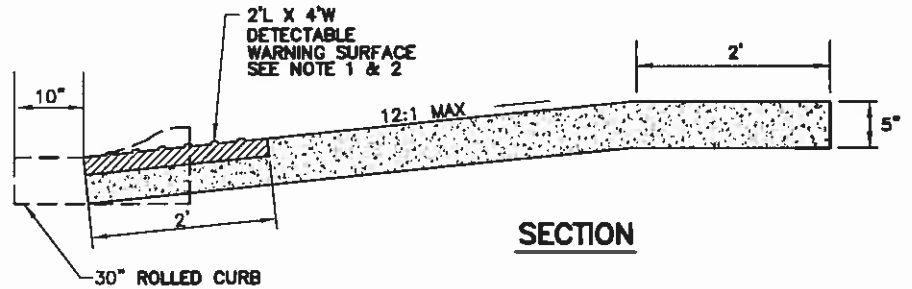
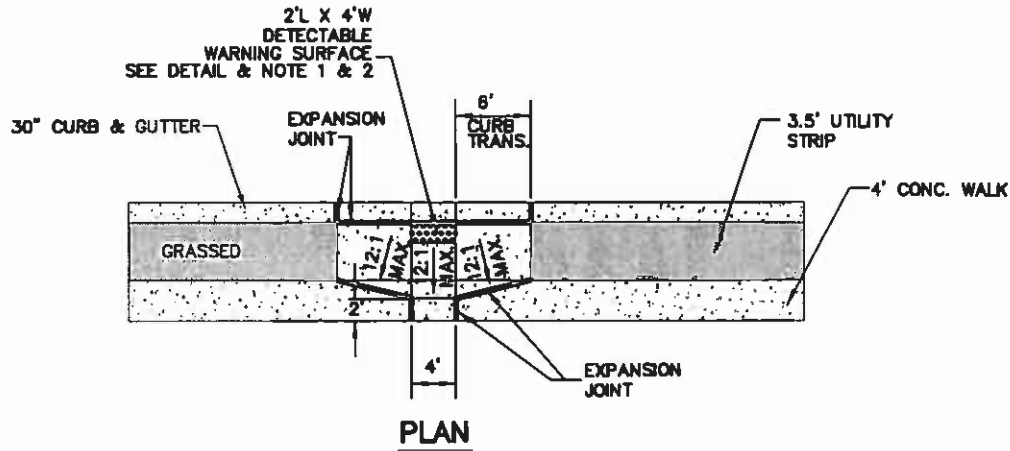
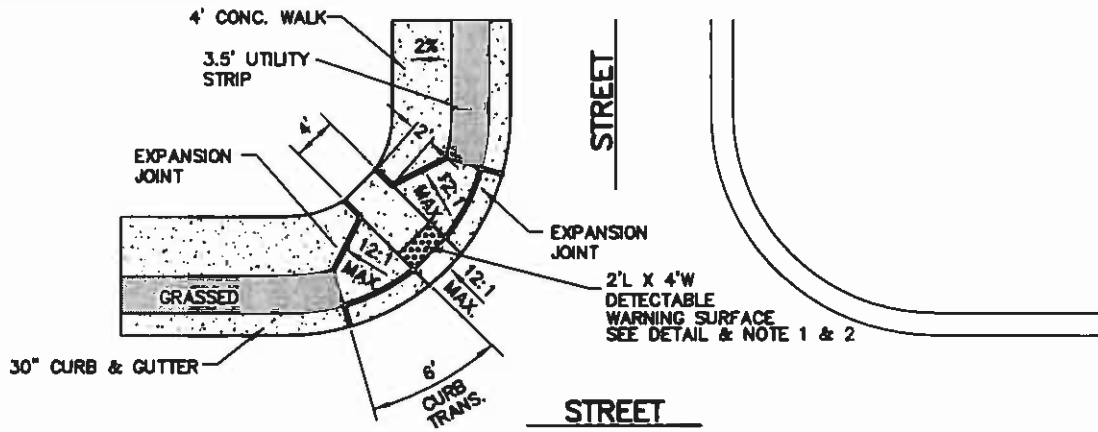
CITY OF MEBANE
STANDARD

INLET RING & COVER
DETAIL (411)

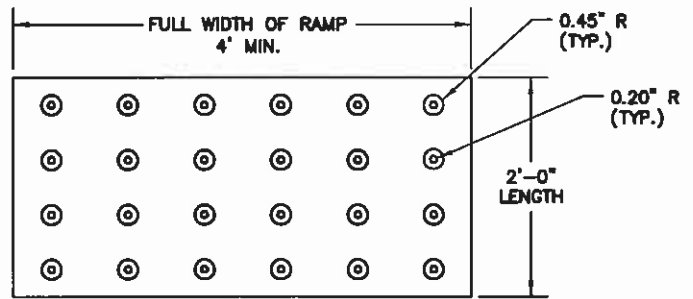
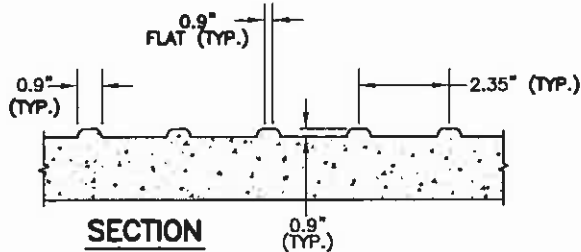
SCALE : N.T.S.

DATE : 3/13/02

DRAWN BY: MHW



1. DETECTABLE WARNING DOMES SHALL COVER 2'-0" LENGTH AND FULL WIDTH OF THE RAMP FLOOR AS SHOWN ON THE DETAILS.
2. THE RAMP MAY BE YELLOW IN COLOR OR ANY COLOR WITH A 70% CONTRAST RATIO.



DETECTABLE WARNING DOMES DETAIL

PLAN

ST-8

CITY OF MEBANE STANDARD

HANDICAP WHEELCHAIR RAMP

SCALE : N.T.S.

DATE : 11/05/09

JOB NO. : MHW

UPON COMPLETION AND ACCEPTANCE OF THE IMPROVEMENTS OUTLINED IN THE PHASING PROGRAM, THE ENTIRE AREA DISTURBED BY PROJECT CONSTRUCTION SHALL BE PROVIDED WITH A PERMANENT VEGETATIVE COVER. THE DISTURBED AREAS SHALL BE FINELY TILLED BY HARROWING. WHERE SOIL CONDITIONS ARE UNFAVORABLE FOR SUCCESSFUL ESTABLISHMENT OF COVER, AVAILABLE TOPSOIL SHALL BE SPREAD. DOLOMITIC LIMESTONE SHALL BE APPLIED AT THE RATE OF 4,000 LBS. PER ACRE AND A 10-10-10 COMMERCIAL FERTILIZER MIX SHALL BE APPLIED AT A RATE OF 1000 LBS., PER ACRE TO THE DISTURBED AREA. IT SHALL BE UNIFORMLY APPLIED TO DISTURBED AREAS ACCORDING TO THE FOLLOWING SCHEDULE BY BROADCASTING WITH A CYCLONE SEEDER OR CLOSE DRILL. SEED SHALL BE LIGHTLY COVERED AND SOIL SHALL BE FIRMED. STRAW MULCH SHALL BE APPLIED TO THE SEEDED AREA AT THE RATE OF 1-1/2 BALES PER 1000 SQ. FT. AND TACKED.

DATES	RATE #/ACRE
JANUARY 1 - MAY 1	
LIMESTONE	2000
FERTILIZER (10-10-10)	750
RYE (GRAIN)	120
MULCH - STRAW & TACK	4000
MAY 1 - AUGUST 15	
LIMESTONE	2000
FERTILIZER (10-10-10)	750
GERMAN MILLET	40
MULCH - STRAW & TACK	4000
AUGUST 15 - JANUARY 1	
LIMESTONE	2000
FERTILIZER (10-10-10)	1000
RYE (GRAIN)	120
MULCH - STRAW & TACK	4000

SCHEDULE FOR PROVIDING PERMANENT
VEGETATIVE COVER

DATES	RATE #/ACRE
NOVEMBER 1 - JANUARY 31	
TALL FESCUE	100
RYE	50
FEBRUARY 1 - APRIL 30	
TALL FESCUE	80
BLUEGRASS	60
MAY 1 - JULY 31	
TALL FESCUE	70
WEEPING LOVEGRASS	20
AUGUST 1 - OCTOBER 31	
TALL FESCUE	100
SUDAN HYBRID	50

ST-9

**CITY OF MEBANE
STANDARD**

**PERMANENT & TEMPORARY
SEEDING SPECIFICATIONS**

SCALE : N.T.S.

DATE : 04/28/06

DRAWN BY:

MHW

WATER TAPS OVER ¾" IN SIZE

1. WATER TAPS OVER ¾" SHALL BE MADE BY OTHERS TO CITY SPECS.
2. A PRE-CAST VAULT SHALL BE USED WITH PRIOR CITY APPROVAL.
3. AN ALUMINUM DOUBLE HATCH BILCO TYPE COVER WITH DOUBLE DOORS WITH A MINIMUM OF 30" X 30" OPENING.
4. COPPER PIPE, BRASS VALVES AND BRASS FITTINGS SHALL BE USED WITH PRIOR CITY APPROVAL.
5. A BY-PASS SHALL BE USED ON ALL TAPS 1 ½" AND GREATER.
6. ALL METERS AND METER VAULTS SHALL BE PLACED ON THE PROPERTY LINE OR RIGHT OF WAY.
7. ALL BACKFLOW ASSEMBLIES SHALL BE TESTED PRIOR TO CITY ACCEPTANCE.
8. ALL BACKFLOW PREVENTION DEVICES SHALL BE ABOVE GROUND IN A HOT BOX WITH AN ELECTRIC POWER OUTLET FOR A HEATER.

SEWER TAPS

1. ALL SEWER TAPS SHALL BE MADE BY THE CITY UNLESS OTHERWISE SPECIFIED.
2. 4" SEWER TAPS SHALL BE THE MINIMUM SIZE PERMITTED BY THE CITY.
3. ALL SEWER SERVICES SHALL BE WITH THE WATER SERVICE.
4. ALL SEWER SERVICES SHALL HAVE A CLEANOUT AT THE PROPERTY LINE.
5. ALL SERVICE PIPE SHALL BE PVC, SCHEDULE 40.

FIRE LINES AND SPRINKER SYSTEMS

1. ALL VAULTS AND DETECTOR CHECKS SHALL BE SET ON THE PROPERTY LINE OR RIGHT OF WAY.
2. DETECTOR CHECKS SHALL HAVE A BY-PASS METER SET AT GROUND LEVEL IN A CAST IRON METER BOX WITH CAST IRON LID.
3. VAULTS SHALL HAVE A PROVISION FOR DRAINAGE.
4. ALL BACKFLOW ASSEMBLIES LARGER THAN 2 INCHES SHALL BE ABOVE GROUND IN "HOT BOX" OR EQUAL ENCLOSURE AND TESTED PRIOR TO CITY ACCEPTANCE. BACKFLOW ASSEMBLIES ARE ALLOWED IN VERTICAL RISERS IN BUILDINGS WHERE ACCESS CAN BE READILY GAINED BY THE CITY.
5. ALL FIRE DEPARTMENT CONNECTIONS SHALL BE LABELED (FDC) WITH 6 INCH LETTERS IN FRONT OF BUILDING WITH DIRECTIONAL ARROWS POINTING TOWARD LOCATION.

GENERAL UTILITY REQUIREMENTS

1. UTILITY LOCATIONS

- Water line under the sidewalk or roadway shoulder 5-feet off edge of pavement.
- Sewer line - middle of street or 5-feet off edge of pavement.
- Natural gas between sidewalk and curb and gutter or in roadway shoulder.
- Electric underground in 10' utility easement.
- Telephone in 10' utility easement.
- Cablevision in right of way behind sidewalk or in utility easement.

2. WATER AND SEWER IMPROVEMENTS

- All water lines are to be a minimum of 8" in size except for cul-de-sacs where 6" is allowed when less than 600 ft. and 4" is allowed when less than 400 ft.
- Water main is to be ductile iron pipe class 50 only.
- Sewer mains are to be a minimum of 8" in size.
- Sewer mains are to be Vitrified Clay Pipe or D.I.P., Class 50, except that SDR 35 may be used in residential areas.

3. STORM DRAINAGE

- All storm drains are to be a minimum of 15" in size.
- Materials are to be reinforced concrete pipe. Alternative pipe material may be used as approved by the Public Works Director.
- Curb inlets to be located where no more than 1.0 acre of drainage contributes to any inlet except in sags where 6' wide basins can be used which will be allowed to drain 1.5 acre sub-basins.

4. CONCRETE SIDEWALKS

- 3,000 P.S.I.
- 4' wide and 5" thick.

5. OTHER

- Any changes to the general requirements shall be preapproved by the Public Works Director.
- City of Mebane Standard Specifications and Details are to be used.
- No burning allowed inside the City of Mebane.

BROKEN OR DAMAGED CURB AND GUTTER REPLACEMENT POLICY

The following methods will be permitted for replacement of broken or damaged curb and gutter:

1. REPLACE THE COMPLETE SECTION OF CURB AND GUTTER.
2. REPLACE A 5-FOOT SECTION OF CURB AND GUTTER WITH 2 - #6 REBAR ON EACH END OF THE 5-FOOT SECTION EMBEDDED 1-FOOT DEEP INTO EACH PIECE OF ORIGINAL CURB DOWELED IN WITH NON-SHRINK GROUT OR APPROVED EXPOXY.
3. REPLACE A 5-FOOT SECTION OF CURB AND GUTTER WITHOUT THE REBAR AND GIVE AN ADDITIONAL 12-MONTH WARRANTY FOR A TOTAL OF 24 MONTHS AFTER ACCEPTANCE BY THE CITY.

CONSTRUCTION INSPECTION

Construction inspection on improvements to become city owned and maintained shall be provided by the city or their designated representative, upon payment of required utility inspection fees. The City shall be advised of any construction problems during the project and shall witness all tests prior to acceptance by the City. All costs associated with tests, etc., shall be borne by the contractor. It is noted that the developer/contractor will need to provide compaction testing in trenches and roads by a certified geotechnical company at their own cost and at an interval as approved by the city.

Any substantial changes made in the approved plans shall be made by the design engineer and copies provided to the city. Should such changes require a permit modification, the design engineer shall provide such revised plans and permits to affect approval of the modifications.

The City will provide the required engineering certifications related to water and sewer permits; however, the design engineer shall provide the as built plans prior to such certifications and acceptance by the City.

CONSTRUCTION AS-BUILTS

The City shall be furnished a complete set of "As Built" plans at the completion of all water, sewer and street projects. No service will be provided until such "as built" plans are provided.

"As Builts" shall include actual rim, top of grate, top of curb, invert elevations of all sewer and storm sewer manholes, catch basins, and junction boxes. The "As-Builts" shall also include all valve and blow off "tie downs" to at least two (2) permanent markers and provided on 8 1/2" x 11" sheets as Intersection Drawings with each street name clearly identified. Provide one (1) reproducible copy and one (1) copy of the "As-Builts". If in digital format, provide a copy on CD-ROM.

SEWER LINE TIE-INS

All sewer tie-ins to existing manholes shall be cored with a boot.

All 6" or greater sewer service lines shall tie into manholes.

Parking Lots

1. All parking lots shall be paved.
2. All parking lots to have standard curb and gutter.
3. Curb and gutter to meet the same specification as in street specifications.